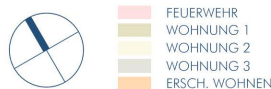
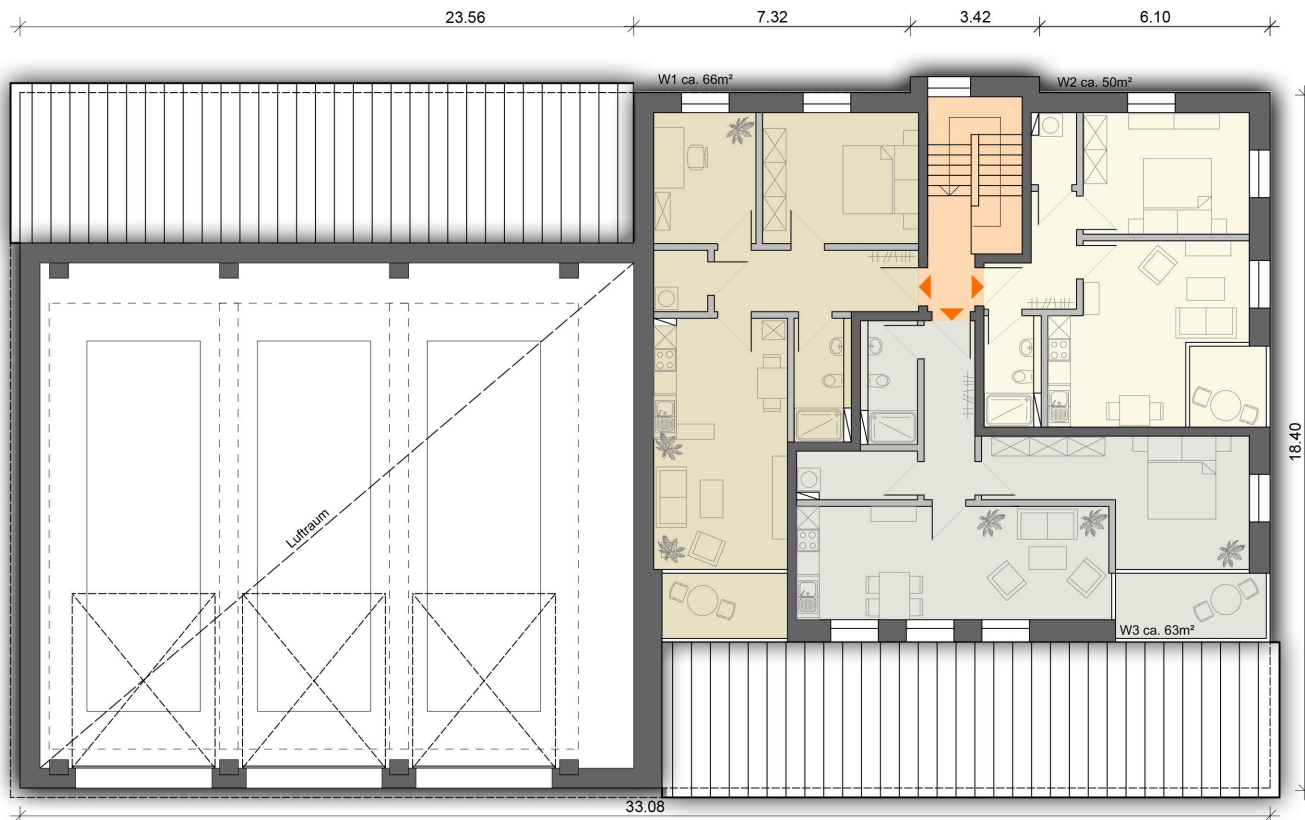




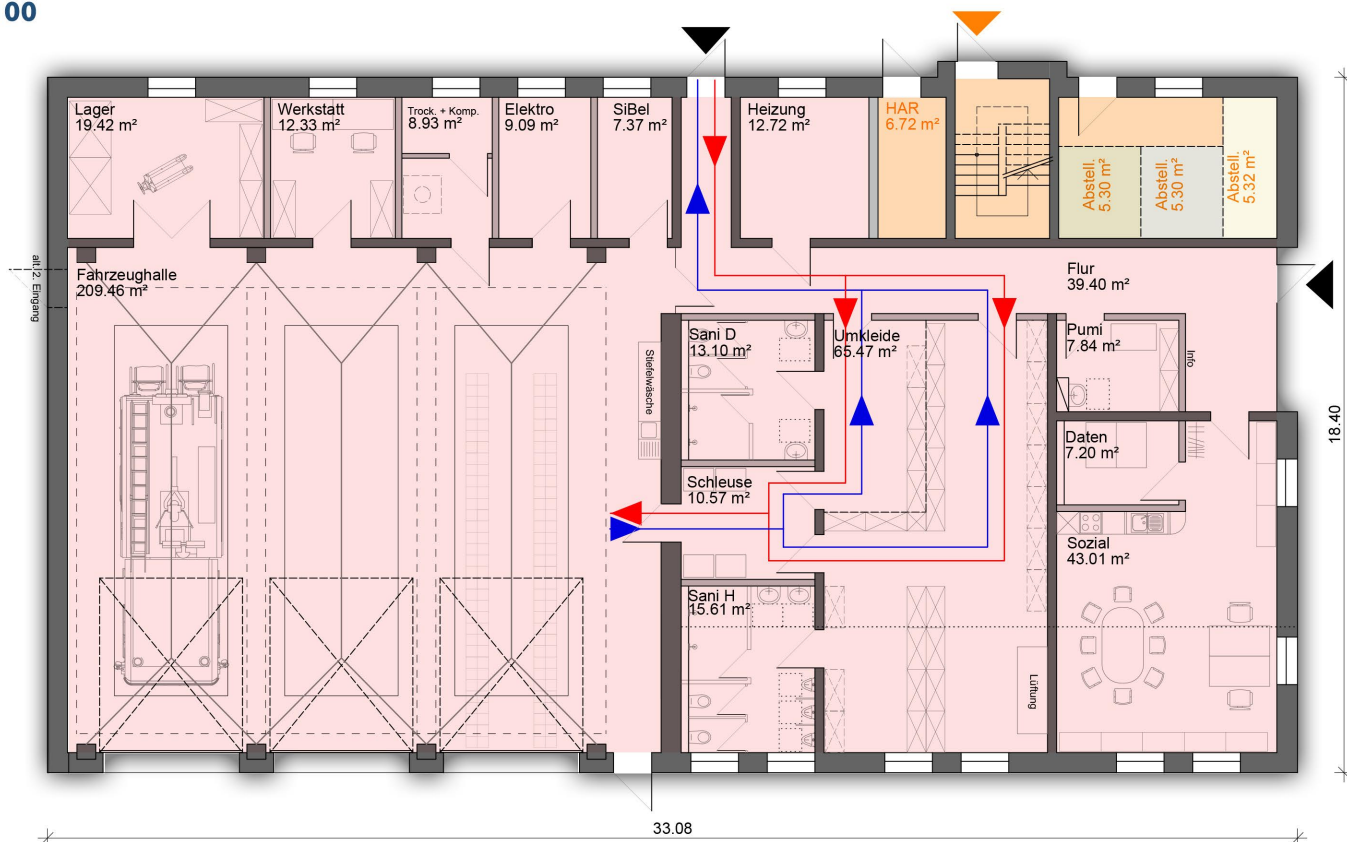
LAGEPLAN 1:250

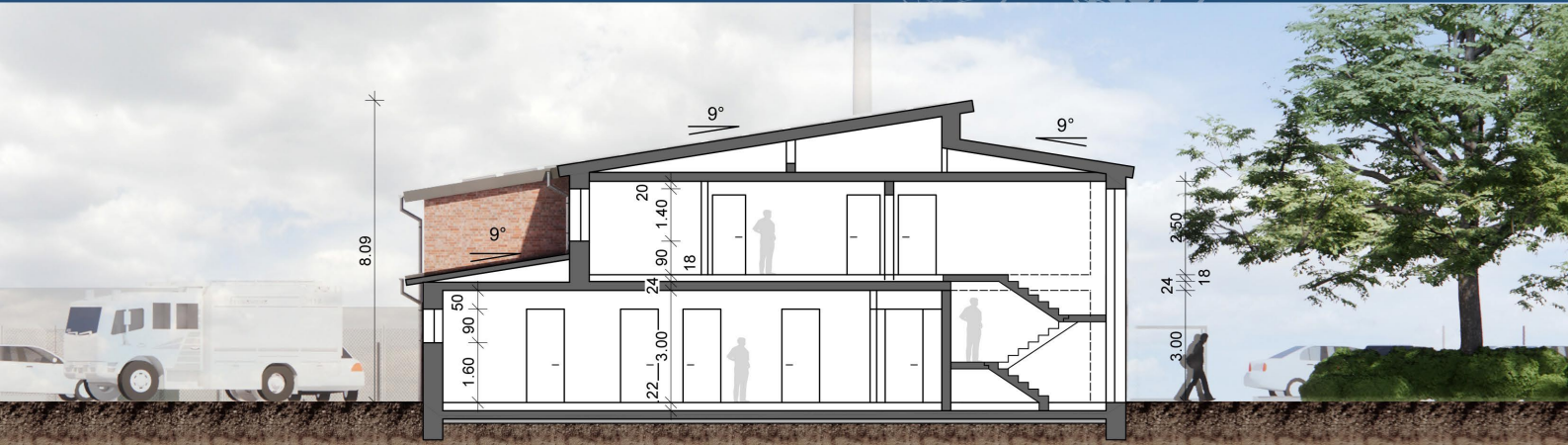


OG 1:100

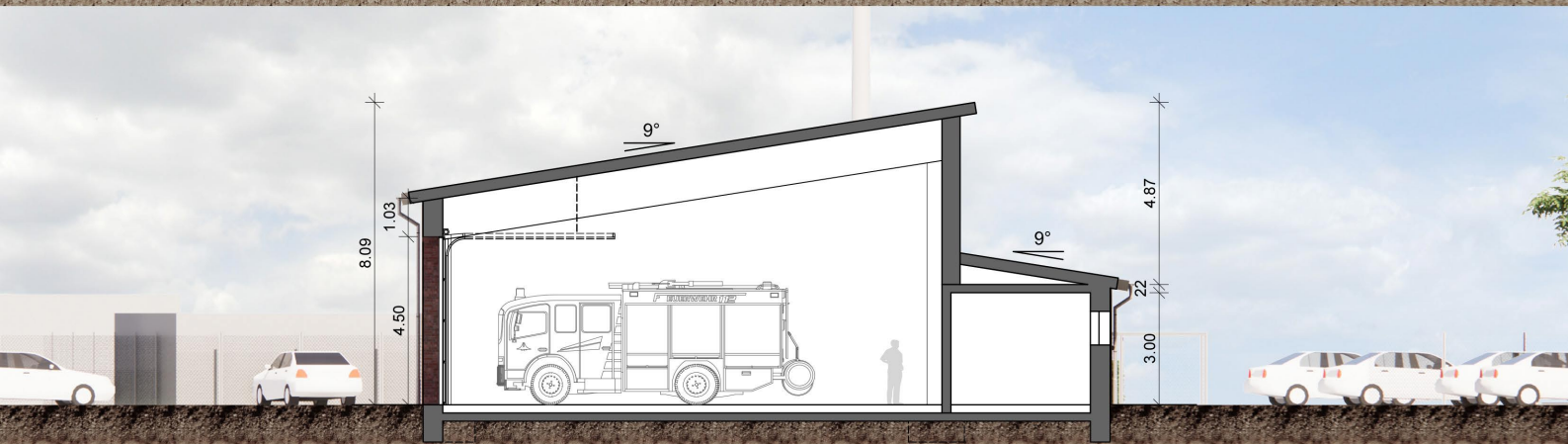


EG 1:100





SYSTEMSCHNITT 1 (FEUERWEHR + BEREICH WOHNEN) 1:100



SYSTEMSCHNITT 2 (HALLE + NEBENRÄUME) 1:100



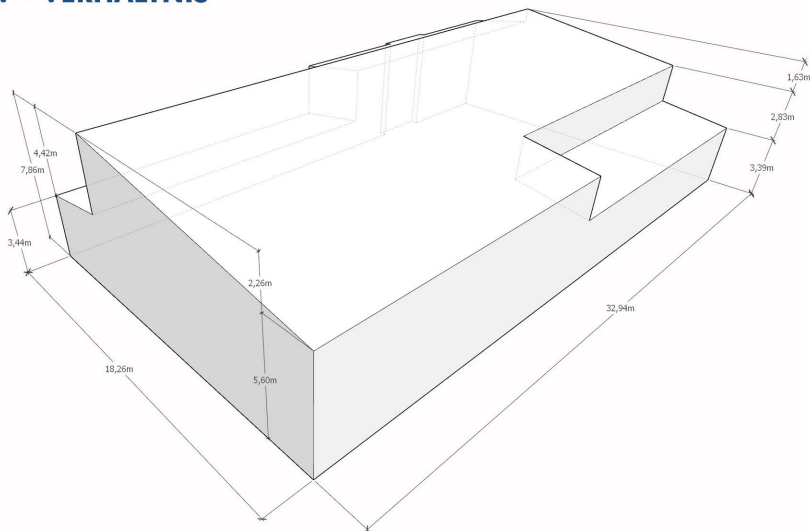
ANSICHT SÜD-WEST 1:100



ANSICHT NORD-OST 1:100



A/V - VERHÄLTNIS



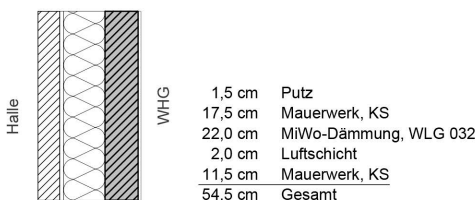
Hüllfläche Gebäude = 1284 m²
 Volumen Gebäude = 3722 m³
 A/V = **0,35**

WANDAUFBAUTEN 1:20

Aussenwand



Wand Halle



Aussenwand Trespa



MUSTERRAUM (WERKSTATT) 1:50

